

## Auto-Exempt Payroll Deductions

Automatically Exempt Unenrolled Payroll Deductions  
Simplify Handling of Local Taxes  
Reduce Unnecessary Transaction Records

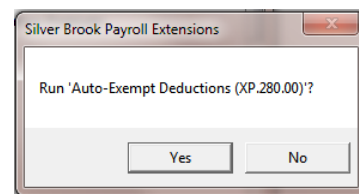
The SL payroll Calculation (02.250.00) screen automatically creates a deduction record for any deduction for which the employee does not already have a record. This method is very effective for items affecting all employees such as FICA and Medicare taxes. However this method is not effective for deductions affecting a subset of employees such as local taxes, child support and garnishments, and similar deductions.

Auto-Exempt Deductions runs when Calculation (02.250.00) is started—before calculation creates employee deduction records automatically. Auto-exempt deductions performs three tasks on deductions configured for Auto-Exempt.

- An employee deduction record marking the person as exempt is created for the employee if the employee has been specifically assigned the deduction.
- Optionally, the exempt flag is cleared if an existing employee deduction record which is marked as exempt has a non-zero deduction amount or arrearage.
- Optionally, the exempt flag may be set in an existing employee deduction record if both the deduction amount specified in the "Fixed Amount/Pct/Rate column and YTD Arrearages are zero.

### Auto-Exempt Setup

Auto-Exempt features are activated by deduction.



### Calculation

Auto-Exempt Deductions is automatically launched by Calculation (02.250.00)

## Technical Specifications

### Product Type

VB Tools Application

### Technical Requirements

Standard Dynamics SL environment  
Customization Manager required

### Supported Dynamics SL Versions

Microsoft Dynamics SL 2018  
Microsoft Dynamics SL 2015

### Available Versions

Microsoft Dynamics SL 2011 and later

Microsoft, Microsoft Dynamics, Microsoft Excel and Solomon are registered trademarks of Microsoft Corporation. Crystal Reports is a registered trademark of Business Objects.