

## Suspend Deductions

Safely and Easily Suspend and Restore Payroll Deductions  
Simplify Handling of Deductions in 5 week and 3 bi-week months  
Avoid errors caused by manual manipulation

**Suspend Deductions** removes designated deductions from payroll calculation runs such as when insurance premiums are deducted only four weeks of a five week month or when a year includes 53 pay periods.

A Microsoft knowledgebase article advises users to remove (by deleting the record) the association of the deduction(s) with each earnings type. After running payroll the user should then restore each association of a deduction with an earnings type. This manual process is time consuming, prone to error, and a poor business procedure.

Suspend Deductions simplifies operations and reduces the risk of error by implementing the Microsoft recommendation in a safe, orderly and controlled manner.

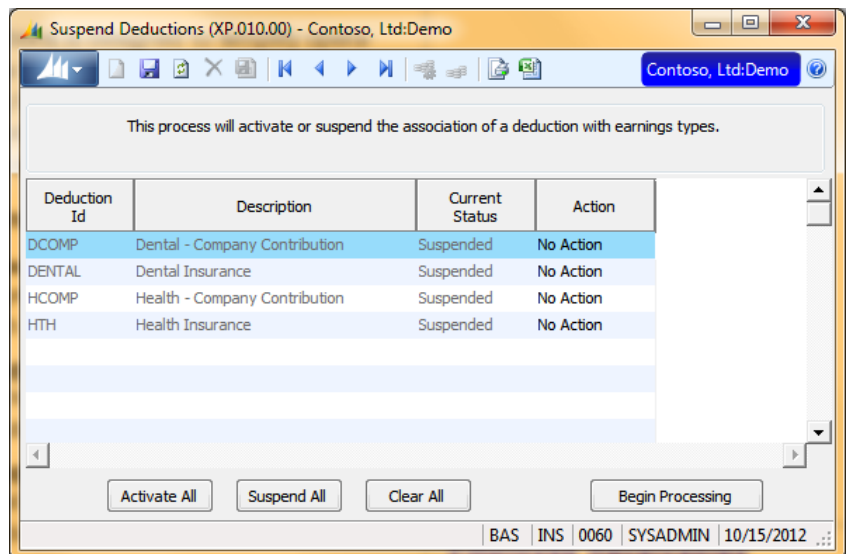
The benefits eligible for suspension are pre-specified during product setup; there is no risk that other deductions (such as withholding taxes, FICA, and SUTA) will be removed from an earnings type in error.

Suspend Deductions clearly displays the current status of deductions on the Calculation (02,500.00) screen. Uncertainty and guessing whether deductions are currently suspended is eliminated.

If necessary, individual deductions can be suspended or re-activated. However, in most cases, running Suspend Deductions is as simple as selecting either "Suspend All" or "Activate All" and clicking "Begin Processing."

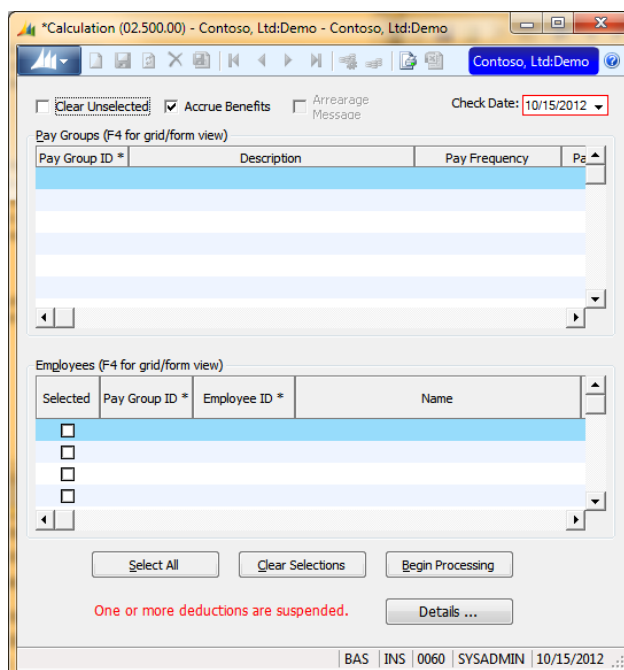
Suspend Deductions scans all earnings types for the deductions being suspended. There is no risk that an earnings type will be overlooked.

Suspend Deductions maintains a record of the deductions suspended and the earnings types they are associated with. There is no risk that an earnings type will be overlooked when deductions are restored; neither is there any risk that a deduction will be restored to an earnings type that should not be associated with the deduction.



### Suspend Deductions

*The Suspend Deductions screen easily suspends and re-activates deductions.*



### Calculation

*The Suspend Deduction status is clearly displayed at the bottom of the screen.*

# Suspend Deductions

SILVER BROOK SYSTEMS

www.silverbrook.com  
Tel: 203-454-0237  
Fax: 203-221-2810

Silver Brook Systems, Inc.  
191 Post Road West  
Westport, CT 06880

## Technical Specifications

### Product Type

VB Tools Application

### Technical Requirements

Standard Dynamics SL/Solomon environment  
Customization Manager required  
for some functions

### Supported Dynamics SL Versions

Microsoft Dynamics SL 2018  
Microsoft Dynamics SL 2015

### Available Versions

Microsoft Dynamics SL 2011 and later



Microsoft, Microsoft Dynamics, Microsoft Excel and Solomon are registered trademarks of Microsoft Corporation.  
Crystal Reports is a registered trademark of Business Objects.