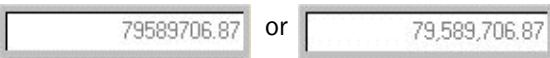


Add Commas to Numeric Fields in Microsoft Dynamics SL Screens

QUICKCOMMA

Which display would you rather see?

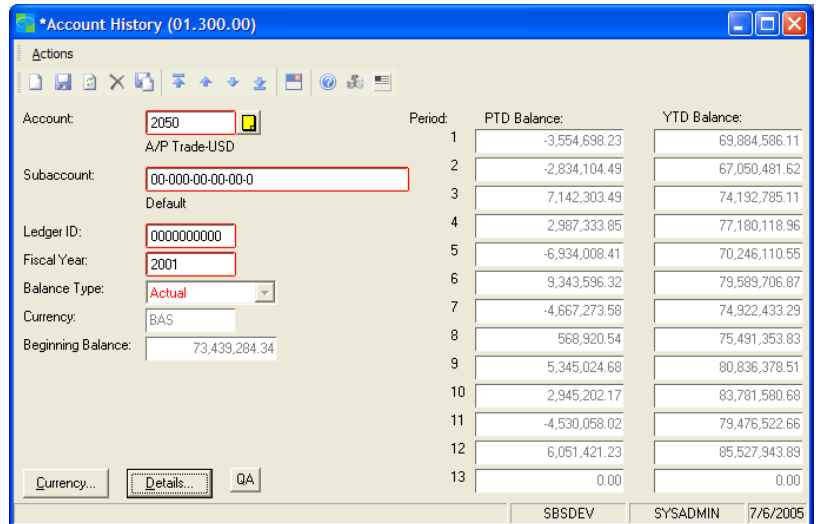


QuickComma for Solomon adds commas to numeric fields in Solomon.

QuickComma includes a customization for every Solomon screen containing a decimal numeric field.

QuickComma's Dynamic Customization adds commas to custom screens and third-party applications.

QuickComma's Installation Utility installs and manages QuickComma customizations quickly and easily.



Grasp values instantly.

QuickComma improves the readability of Microsoft Dynamics SL (Solomon) screens so you can obtain information quickly and accurately.

Technical Specifications

Product Type

Dynamics SL (Solomon) Customization
(Supplemental Product)

Technical Requirements

Standard Dynamics SL (Solomon) environment
Customization Manager

Supported Versions

Solomon Version 5.5 and higher
Microsoft Dynamics SL 6.5 and higher